



Schenectady City School District

Mosaic Associates
Kersten Lorcher, AIA

Phase I – Capital Project Update
21st of September, 2016



CAPITAL PROJECT UPDATE | Outline

- Group B Projects Status Update:
Mont Pleasant Middle School
Oneida Middle School
- Group C Projects Status Update:
Central Park Middle School
Howe Elementary
Van Corlaer Elementary
- Group D Projects Status Update:
Hometown Health Center @ MPMS
Hometown Health Center @ SHS
Ph 1B - CPMS – Exterior Masonry / Roof Repair Project
- Next Steps:
Critical & Milestone Dates

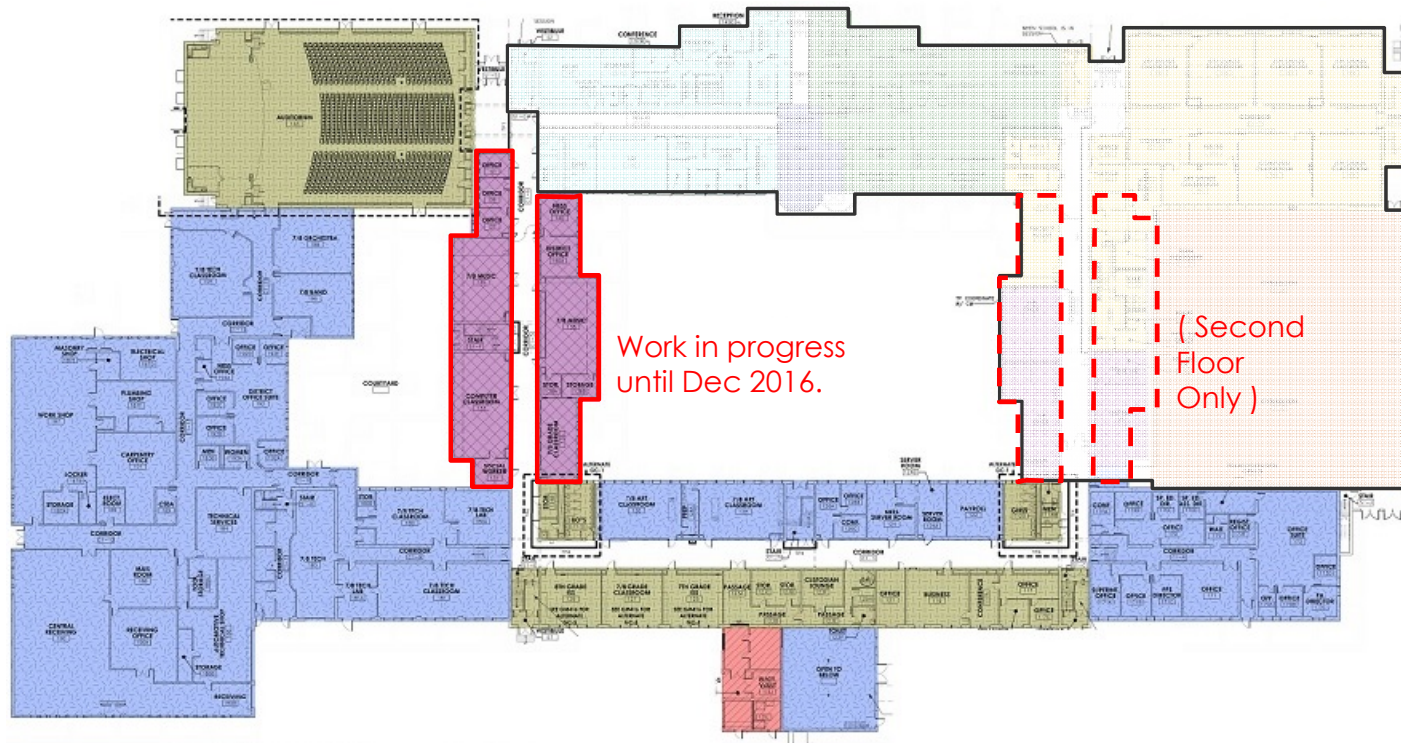




CAPITAL PROJECT | Group B

- MPMS – Phases 1, 2 & 3

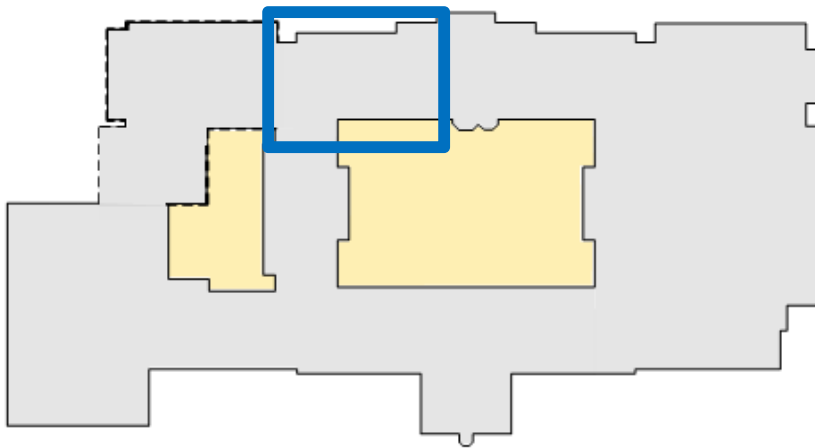
Work substantially complete





CAPITAL PROJECT | Group B

- MPMS – Third Floor



Library / Media Center



CAPITAL PROJECT | Group B

- OMS Substantially complete.
Punch List being addressed.





CAPITAL PROJECT | Group B

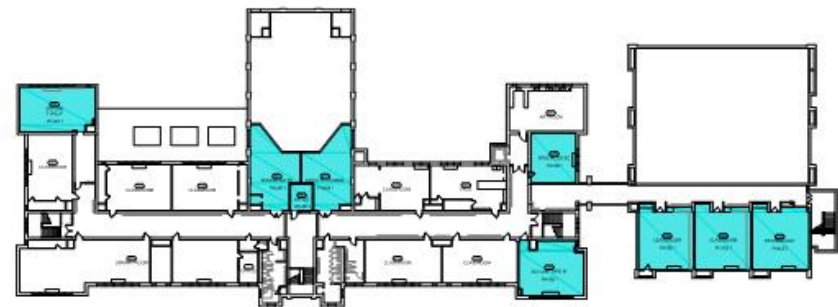
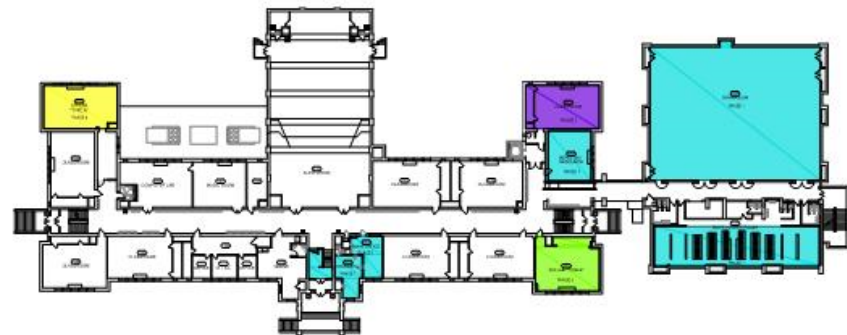
- OMS Substantially complete.
Punch List being addressed.





CAPITAL PROJECT | Group C

- CENTRAL PARK MIDDLE SCHOOL
 - Phase 1 complete
 - Work on schedule



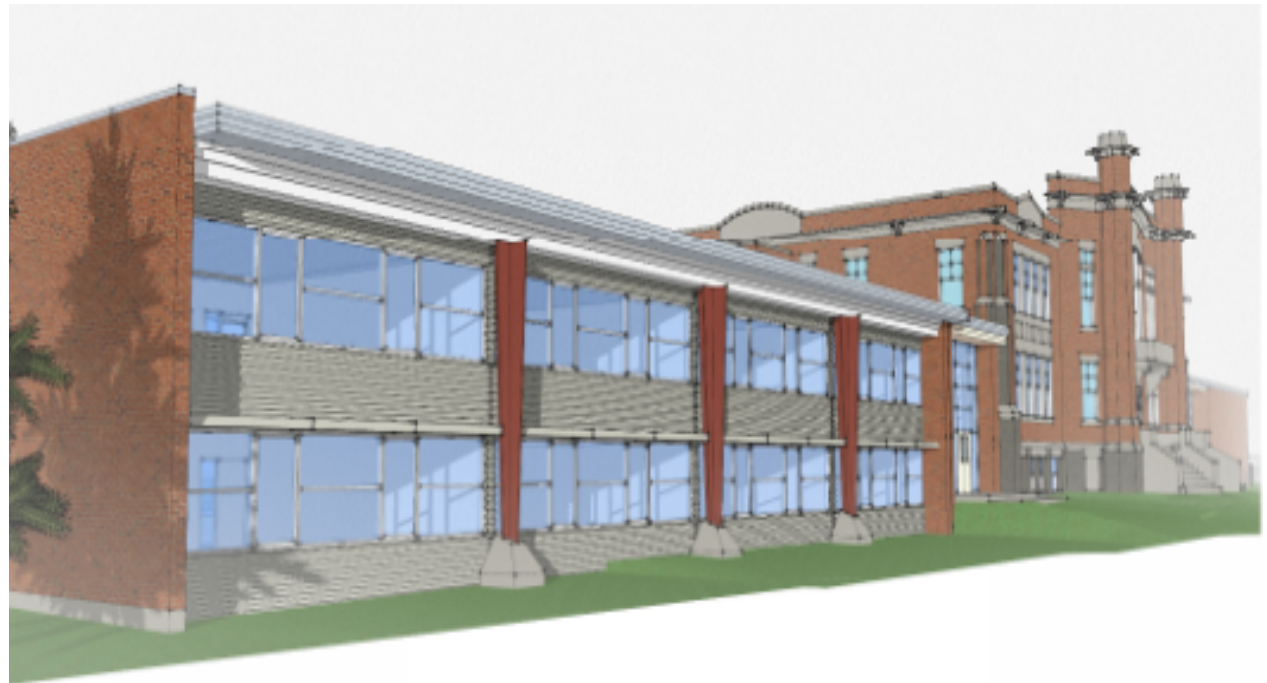
Based on Contractor Schedule of 07.05.16

PHASE 1	Blue	Completed areas to 07/05/16
PHASE 2	Purple	Areas to be completed
PHASE 3	Green	Areas to be completed by 07/05/16
PHASE 4	Yellow	Areas to be completed by 07/05/16



CAPITAL PROJECT | Group C

- Howe Elementary School -
 - Contracts and product submittals are being processed.
 - Construction in progress.





CAPITAL PROJECT | Group C

- Howe Elementary School -
 - Contracts and product submittals are being processed.
 - Construction in progress.





CAPITAL PROJECT | Group C

- Van Corlaer ES -
 - Contracts and product submittals in progress
 - Phase 1 complete
 - Temporary partitions erected
 - Construction in progress on 2nd shift





CAPITAL PROJECT | Group D

- Hometown Health Centers
 - MPMS Hometown Health complete; DOH reviewed & permitted.
 - Substantial Completion at SHS: mid October





CAPITAL PROJECT | Group D

- Phase 1B - CPMS – Exterior Masonry / Roof Repairs
 - Roof repair documents complete. Sent to NYSED.
 - Exterior masonry reconstruction design in progress.





CAPITAL PROJECT UPDATE | Next Steps & Milestones

- 23 December 2016 Finish Phase 3 at Mont Pleasant MS.
- Fall 16 – December 16 Ongoing construction at CPMS & OMS.
- Fall 16 – Summer 17 Ongoing construction MPMS, HOWE & CPMS exterior.
- Fall 16 – Fall 17 Ongoing construction VCES.
- Summer 2017 Construct new bus drop off loop at MPMS.
- September 2017 Reopen HOWE ES.



THANK YOU | Any Questions?

